

RECOMMENDED GAP WIDTH

PCB + 6.35 (.250)

RECOMMENDED TORQUE

68 N-cm (6 in-lbs)
With "L" option 90 N-cm (8 in-lbs)

WEIGHT

1.34 g/cm (.120 oz/in)

MATERIALS AND FINISH

WEDGES

Material:
Aluminum Alloy 6061-T6 per per
ASTM-B221 or AMS-QQ-A-200/8

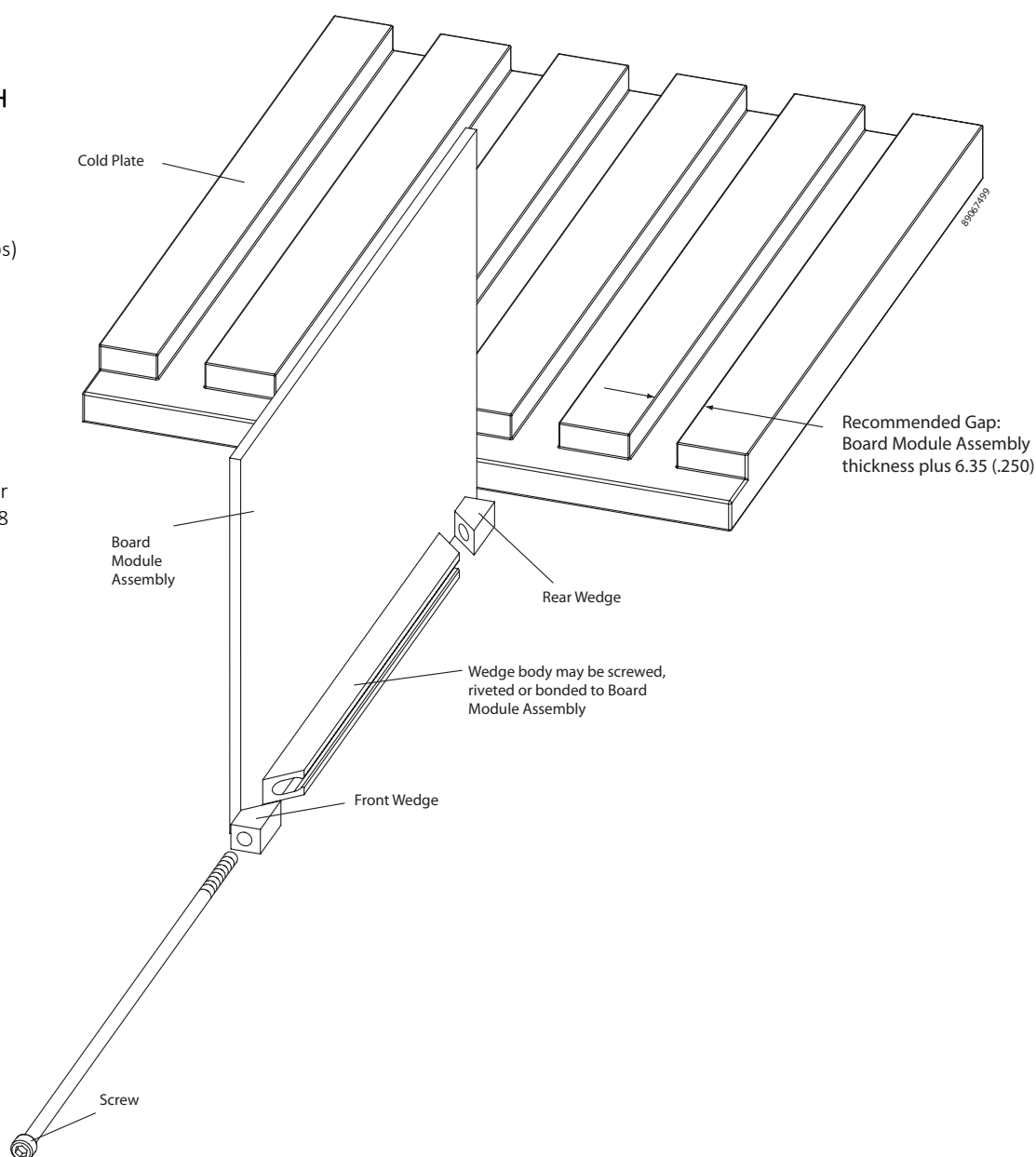
Finish:
See finish table on opposite
page

SCREW

.09-in. or 2.5-mm hex. socket
head cap screw, depending
on mounting configuration

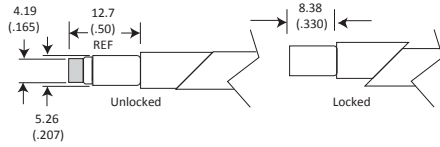
Material:
Stainless steel per ASTM-
A582

Finish:
Passivate per AMS2700



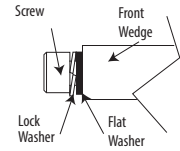
Detail "V"

Provides visual lock indication.



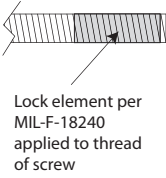
Detail "W"

Provides added resistance to loosening from shock and vibration. This option adds no additional screw length unless combined with the "R" suffix option, then adds 2.5 (.10) total.



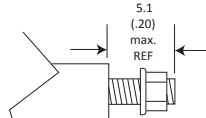
Detail "L"

Provides prevailing torque for resistance to loosening from shock and vibration.



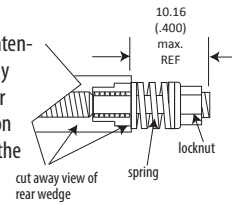
Detail "R"

Reduces the possibility of unintentional disassembly of the screw from rear wedge. This option adds no additional screw length with or without "CR" unless included with "W" option, then 2.5 (.10) total.



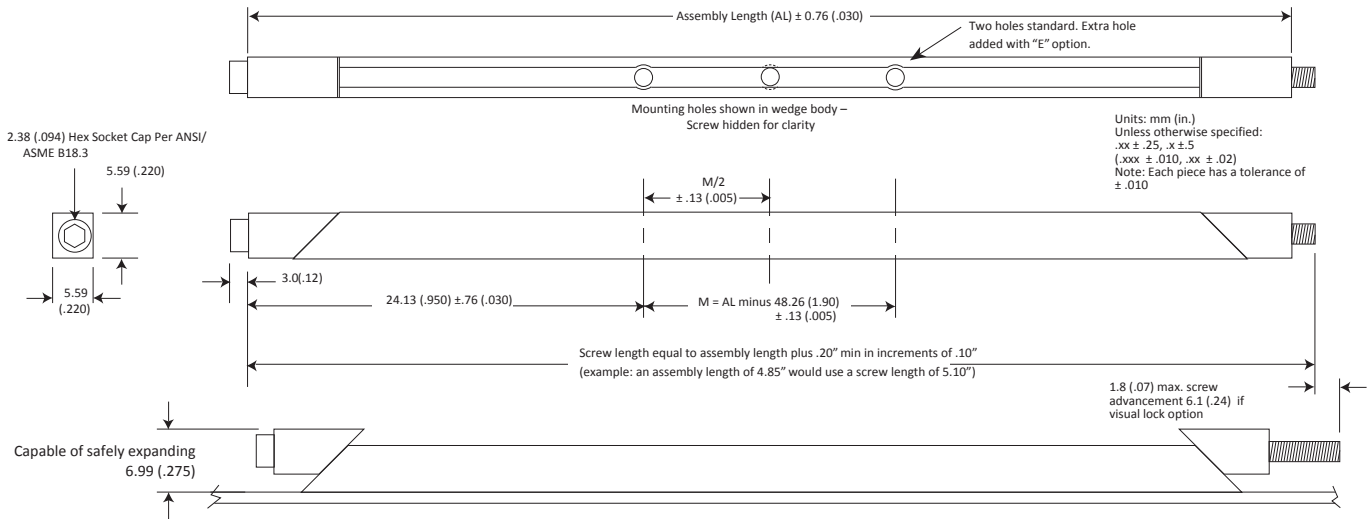
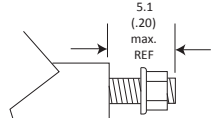
Detail "K"

Prevents the unintentional disassembly of screw from rear wedge. This option adds 5.1 (.20) to the screw length.



Detail "CR"

If the "R" option is included with this "CR" option, then the locknut is stainless steel.



Part Number Code Series 230 Card-Lok Three Piece

Prefix options

Metric Screw Head M2.5 Hex Drive **M**
Standard Screw Head 3/32 Hex Drive **[blank]**
Lock and Flat Washer **W**
None **[blank]**
Visual Indicator **V**
No Visual Indicator **[blank]**
Black Anodize **A**
or choose from Finish Table **see table**

Suffix options

Stainless Steel Lock Nut if "R" option is selected **CR**
Standard Steel Lock Nut **"-"**

Assembly length in inches. Standard lengths range from 71.12 (2.80), 96.52 (3.80) and 121.9 (4.80). **length.xx**
Other lengths available upon request

Additional Center Mounting Hole **E**
None **[blank]**
Mounting Options - holes for rivet mounting **H**
or choose from Mounting Option **see table**
Lock Element **L**
None **[blank]**
Lock Nut **R**
Captive Screw **K**
None **[blank]**

Part Number Code Example: VA230CR-4.80HR

Series 230 Card-Lok three piece 121.9 (4.80) long with visual indicator, black anodize finish, standard rivet mounting holes and stainless steel lock nut option

CODE LETTER	FINISH
[blank]	CHEM FILM PER MIL-DTL-5541 CLASS 3, GOLD
"R"	CHEM FILM PER MIL-DTL-5541 CLASS 3, TYPE II, CLEAR
"A"	BLACK ANODIZE PER MIL-A-8625 TYPE II, CLASS 2
"HA"	HARD BLACK ANODIZE PER MIL-A-8625 TYPE III, CLASS 2
"EN"	ELECTROLESS NICKEL PER MIL-C-26074 CLASS 4, GRADE B, BRIGHT

CODE LETTER	MOUNTING METHOD
[blank]	NO MOUNTING HOLES
"H"	RIVET MOUNTING Ø1.70 (.067) HOLE WITH 3.96 (.156) COUNTERBORE x 4.19 (.165) DEEP AND 100° x 3.56 (.140) COUNTERSINK
"T0"	0-80 TAPPED HOLE
"T2"	2-56 TAPPED HOLE
"TM2"	M2 x 0.40 TAPPED HOLE
"TM2.5"	M2.5 x 0.45 TAPPED HOLE